

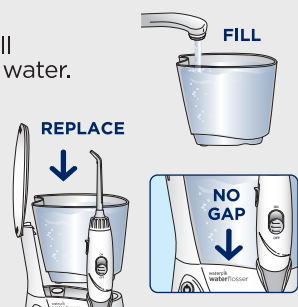
waterpik® waterflosser® Model WP-660/670/672/674/676

QUICK START GUIDE

Review full instruction book prior to first use

1 Prepare the Reservoir

Remove the reservoir and fill with lukewarm water. Replace the reservoir onto the base. There should be no gap between the reservoir and the base.

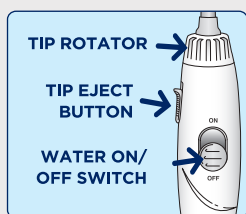
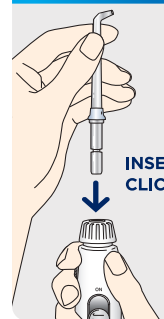


3 Prime Unit (First Time Use Only)

Prior to Very First Use of Unit: Set pressure control dial to **highest position**, point the tip into sink. Turn power on. Slide water switch **ON** until water flows from the tip with substantial force. Turn power **OFF**.



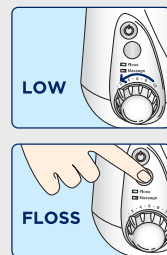
2 Select and Insert Tip



Caution: Do not slide tip eject button while unit is running.

4 Adjust Pressure and Mode Selection

For first time users, adjust pressure control to **lowest position**. Gradually increase pressure to your liking.



Press the mode button once and one LED will display current mode. Press mode button again to change modes. Floss Mode is suggested for first time use.

continued on back

This device is compatible with global voltages of 100-240VAC, 50/60Hz.

5 Using your Waterpik® Water Flosser / Technique Tips for Best Results

Always place tip in mouth before turning water ON.

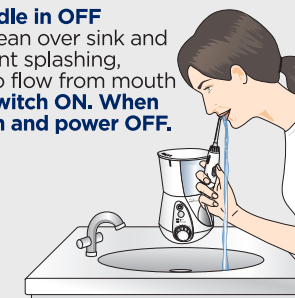


With water switch on handle in **OFF position**, turn power on. Lean over sink and close lips enough to prevent splashing, while still allowing water to flow from mouth into the sink. **Turn water switch ON. When finished, turn water switch and power OFF.**

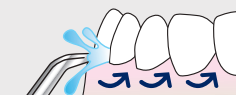


During use, you can stop water flow by sliding water switch on handle to the **OFF position**.

Note: Motor will continue to run.



Aim the water stream just above the gumline at a 90 degree angle. Starting with the back teeth, follow the gumline and pause briefly between teeth. Continue until all areas around and between teeth have been cleaned.



6 Timer and Massage Mode

Timer: In Floss Mode the timer will provide a short pause at 30 seconds for pacing and at 1-minute to indicate recommended cleaning time is complete.

Note: Timer may be deactivated if desired. See instruction book for details.

Massage Mode: For best results, use the Floss Mode as instructed. Switch to Massage Mode, adjust pressure as desired, and aim the water stream at your gums and massage throughout your mouth.

Note: See instruction book for full details.



7 REGISTER YOUR PRODUCT ONLINE NOW!

Receive up to **£45** in savings on the purchase of additional Waterpik® products.
www.waterpik.co.uk/registration

For product questions and spare parts, please contact Waterpik International, Inc. customer services on: +44 (0) 333 123 5677

www.waterpik.co.uk
 ©2014 Water Pik, Inc.

20018872-F AA